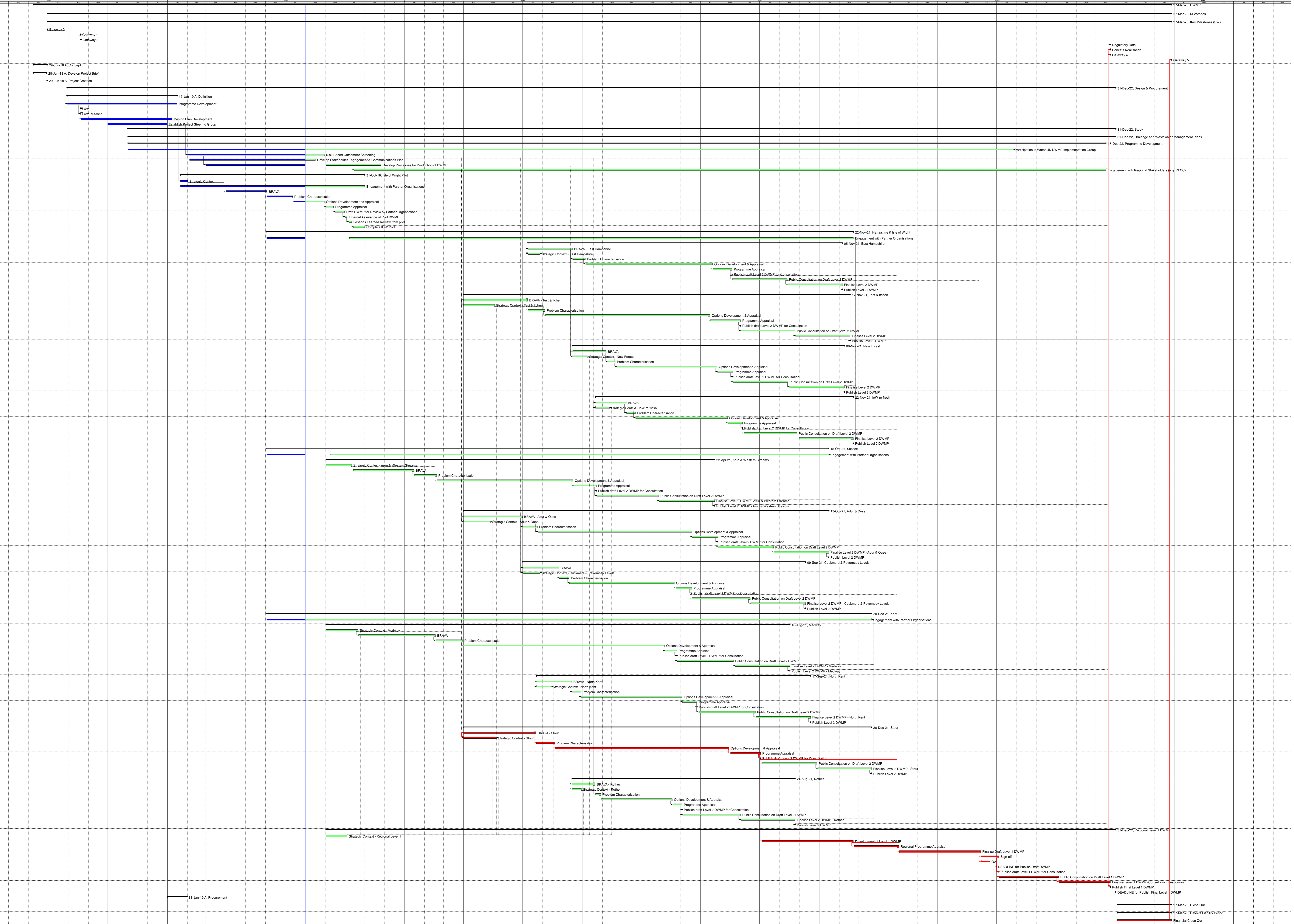


Category	Item	Start	End
<b>DWMP</b>		09 Oct 18	27 Mar 23
<b>Milestones</b>		09 Oct 18	27 Mar 23
<b>Key Milestones (SW)</b>		09 Oct 18	27 Mar 23
Gateway 0	0	29-Jun-18A	
A1110	0	20-Aug-18A	
Gateway 1	0	20-Aug-18A	
A1120	0	23-Dec-22	
Gateway 2	0	23-Dec-22	
A1170	0	23-Dec-22	
Gateway 3	0	23-Dec-22	
A1200	0	23-Dec-22	
Gateway 4	0	23-Dec-22	
A1160	0	27-Mar-23	
Gateway 5	0	27-Mar-23	
A1160	0	27-Mar-23	
<b>Concept</b>		08-Jun-18A	28-Jun-18A
<b>Develop Project Brief</b>		08-Jun-18A	28-Jun-18A
<b>Project Creation</b>		08-Jun-18A	28-Jun-18A
<b>Design &amp; Procurement</b>		08-Jun-18A	28-Jun-18A
<b>Definition</b>		08-Jun-18A	28-Jun-18A
A7070	Programme Development	030-Jul-18A	15-Jun-19A
A4880	DW	0	20-Aug-18A
A4840	DW Meeting	020-Aug-18A	20-Aug-18A
A7080	Design Plan Development	021-Aug-18A	08-Jun-19A
A6950	Establish Project Steering Group	021-Oct-18A	31-Dec-18A
A6950	Establish Project Steering Group	048-Nov-18A	31-Dec-22
<b>Study</b>		08-Jun-18A	31-Dec-22
<b>Drainage and Wastewater Management Plans</b>		08-Jun-18A	31-Dec-22
<b>Programme Development</b>		08-Jun-18A	31-Dec-22
A2000	Participation in Water UK DWMP Implementation Group	24-Nov-18A	30-Aug-19
A8070	Risk Based Catchment Screening	21-Feb-19A	30-Aug-19
A8800	Develop Stakeholder Engagement & Communications Plan	12-Oct-19A	16-Aug-19
A2000	Develop Processes for Production of DWMP	01-Mar-19A	20-Nov-19
A8210	Engagement with Regional Stakeholders (e.g. RFOC)	21-Oct-19A	16-Dec-22
<b>Test &amp; Lichen</b>		08-Jun-18A	31-Dec-22
A1710	Strategic Context	021-Sep-19A	01-Feb-19A
A1740	Engagement with Partner Organisations	05-21-Jun-19A	31-Oct-19
A1710	Strategic Context	021-Sep-19A	03-Jun-18A
A8000	Problem Characterisation	03-Jun-19A	12-Jul-19A
A8100	Options Development and Appraisal	21-Oct-19A	30-Aug-19
A8100	Programme Appraisal	10-Oct-19A	13-Sep-19
A1190	Draft DWMP for Review by Partner Organisations	11-Sep-19A	30-Sep-19
A8110	External Assurance of Plan DWMP	4-Oct-19A	04-Oct-19
A8170	Lessons Learned Review from pilot	5-Oct-19A	11-Oct-19
A8800	Complete DWMP	14-Oct-19A	31-Oct-19
<b>Hampshire &amp; Isle of Wight</b>		08-Jun-18A	31-Dec-22
A8150	Engagement with Partner Organisations	029-Jun-19A	22-Nov-21
<b>East Hampshire</b>		08-Jun-18A	31-Dec-22
A8200	Strategic Context - East Hampshire	13-Oct-20	27-Jul-20
A8110	Problem Characterisation	14-Sep-20	05-Dec-20
A8120	Options Development & Appraisal	130-Oct-20	19-Apr-21
A8130	Programme Appraisal	21-Nov-20	19-May-21
A8900	Options Development & Appraisal	0	19-May-21
A8140	Public Consultation on Draft Level 2 DWMP	02-May-21	12-Aug-21
A8870	Finalise Level 2 DWMP	03-Aug-21	05-Nov-21
A8840	Finalise Level 2 DWMP	0	05-Nov-21
<b>Test &amp; Lichen</b>		08-Jun-18A	31-Dec-22
A8910	Strategic Context - Test & Lichen	07-Oct-20	08-Jul-20
A8900	Strategic Context - Test & Lichen	31-Oct-20	18-May-20
A8900	Problem Characterisation	19-Oct-20	04-Aug-20
A8900	Options Development & Appraisal	171-Oct-20	15-Apr-21
A9000	Programme Appraisal	31-Nov-20	01-Jun-21
A8910	Options Development & Appraisal	0	01-Jun-21
A8920	Public Consultation on Draft Level 2 DWMP	02-Jun-21	24-Aug-21
A8930	Finalise Level 2 DWMP	02-May-21	17-Nov-21
A8940	Finalise Level 2 DWMP	0	17-Nov-21
<b>New Forest</b>		08-Jun-18A	31-Dec-22
A9050	Strategic Context - New Forest	38-Sep-20	08-Nov-20
A9050	Strategic Context - New Forest	17-Sep-20	08-Oct-20
A9070	Problem Characterisation	10-Nov-20	20-Nov-20
A9080	Options Development & Appraisal	101-Nov-20	26-Apr-21
A9090	Programme Appraisal	17-Nov-20	20-May-21
A9100	Options Development & Appraisal	0	20-May-21
A9110	Public Consultation on Draft Level 2 DWMP	02-May-21	13-Aug-21
A9120	Finalise Level 2 DWMP	02-May-21	08-Nov-21
A9130	Finalise Level 2 DWMP	0	08-Nov-21
<b>Isle of Wight</b>		08-Jun-18A	31-Dec-22
A9170	Strategic Context - Isle of Wight	34-Oct-20	07-Dec-20
A9170	Strategic Context - Isle of Wight	16-Oct-20	11-Nov-20
A9170	Problem Characterisation	10-Oct-20	21-Dec-20
A9180	Options Development & Appraisal	01-Dec-20	12-May-21
A9190	Programme Appraisal	16-May-21	04-Jun-21
A9200	Options Development & Appraisal	0	04-Jun-21
A9210	Public Consultation on Draft Level 2 DWMP	07-Jun-21	27-Aug-21
A9220	Finalise Level 2 DWMP	03-Aug-21	22-Nov-21
A9230	Finalise Level 2 DWMP	0	22-Nov-21
<b>Sussex</b>		08-Jun-18A	31-Dec-22
A8400	Engagement with Partner Organisations	024-Jun-19A	15-Oct-21
<b>Arun &amp; Western Streams</b>		08-Jun-18A	31-Dec-22
A8140	Strategic Context - Arun & Western Streams	30-Sep-19	11-Oct-19
A8150	Strategic Context - Arun & Western Streams	06-Oct-19	15-Jun-20
A8160	Problem Characterisation	25-Sep-19	19-Feb-20
A8170	Options Development & Appraisal	145-Oct-19	16-Sep-20
A8180	Programme Appraisal	28-Sep-19	22-Oct-20
A8190	Options Development & Appraisal	0	22-Oct-20
A8200	Public Consultation on Draft Level 2 DWMP	02-Nov-20	26-Jan-21
A8210	Finalise Level 2 DWMP - Arun & Western Streams	02-Nov-21	22-Apr-21
A8220	Finalise Level 2 DWMP - Arun & Western Streams	0	22-Apr-21
<b>Adur &amp; Ouse</b>		08-Jun-18A	31-Dec-22
A8240	Strategic Context - Adur & Ouse	01-Apr-20	30-Jun-20
A8250	Strategic Context - Adur & Ouse	27-Apr-20	12-May-20
A8260	Problem Characterisation	17-Apr-20	23-Jul-20
A8270	Options Development & Appraisal	161-May-20	18-May-21
A8280	Programme Appraisal	28-Apr-20	21-Apr-21
A8290	Options Development & Appraisal	0	21-Apr-21
A8300	Public Consultation on Draft Level 2 DWMP	08-May-21	22-Jul-21
A8310	Finalise Level 2 DWMP - Adur & Ouse	02-Jun-21	15-Oct-21
A8320	Finalise Level 2 DWMP - Adur & Ouse	0	15-Oct-21
<b>Cuckmere &amp; Peversey Levels</b>		08-Jun-18A	31-Dec-22
A8330	Strategic Context - Cuckmere & Peversey Levels	01-Jun-20	25-Aug-20
A8340	Strategic Context - Cuckmere & Peversey Levels	19-Jun-20	27-Jul-20
A8350	Problem Characterisation	11-Jun-20	10-Sep-20
A8360	Options Development & Appraisal	108-Sep-20	19-Feb-21
A8370	Programme Appraisal	19-Feb-21	18-Mar-21
A8380	Options Development & Appraisal	0	18-Mar-21
A8390	Public Consultation on Draft Level 2 DWMP	03-Mar-21	09-Jun-21
A8400	Finalise Level 2 DWMP - Cuckmere & Peversey Levels	03-Mar-21	09-Jun-21
A8410	Finalise Level 2 DWMP	0	09-Jun-21
<b>Medway</b>		08-Jun-18A	31-Dec-22
A8420	Strategic Context - Medway	06-Sep-19	16-Aug-21
A8430	Strategic Context - Medway	36-Oct-19	21-Oct-19
A8440	Problem Characterisation	22-Oct-19	17-Feb-20
A8450	Options Development & Appraisal	30-Feb-20	30-Mar-20
A8460	Programme Appraisal	21-Mar-20	04-Feb-21
A8470	Options Development & Appraisal	13-Feb-21	23-Feb-21
A8480	Options Development & Appraisal	0	23-Feb-21
A8490	Public Consultation on Draft Level 2 DWMP	02-Feb-21	21-Feb-21
A8500	Finalise Level 2 DWMP - Medway	02-May-21	16-Aug-21
A8510	Finalise Level 2 DWMP	0	16-Aug-21
<b>North Kent</b>		08-Jun-18A	31-Dec-22
A8520	Strategic Context - North Kent	28-Jun-20	14-Sep-20
A8530	Strategic Context - North Kent	17-Jun-20	13-Aug-20
A8540	Problem Characterisation	10-Jun-20	28-Sep-20
A8550	Options Development & Appraisal	104-Sep-20	03-Mar-21
A8560	Programme Appraisal	17-Mar-21	26-Mar-21
A8570	Options Development & Appraisal	0	26-Mar-21
A8580	Public Consultation on Draft Level 2 DWMP	02-Mar-21	24-Jun-21
A8590	Finalise Level 2 DWMP - North Kent	02-Jun-21	17-Sep-21
A8600	Finalise Level 2 DWMP	0	17-Sep-21
<b>Stour</b>		08-Jun-18A	31-Dec-22
A8610	Strategic Context - Stour	24-Jun-20	21-Jul-20
A8620	Strategic Context - Stour	34-Jun-20	21-May-20
A8630	Problem Characterisation	21-Jul-20	19-Aug-20
A8640	Options Development & Appraisal	180-Aug-20	14-May-21
A8650	Programme Appraisal	34-May-21	02-Jul-21
A8660	Options Development & Appraisal	0	02-Jul-21
A8670	Public Consultation on Draft Level 2 DWMP	05-Jul-21	27-Sep-21
A8680	Finalise Level 2 DWMP - Stour	02-Sep-21	20-Dec-21
A8690	Finalise Level 2 DWMP	0	20-Dec-21
<b>Rother</b>		08-Jun-18A	31-Dec-22
A8700	Strategic Context - Rother	28-Sep-20	20-Oct-20
A8710	Strategic Context - Rother	11-Sep-20	29-Sep-20
A8720	Problem Characterisation	7-Oct-20	29-Oct-20
A8730	Options Development & Appraisal	70-Oct-20	16-Feb-21
A8740	Programme Appraisal	11-Feb-21	03-Mar-21
A8750	Options Development & Appraisal	0	03-Mar-21
A8760	Public Consultation on Draft Level 2 DWMP	03-Mar-21	01-Jun-21
A8770	Finalise Level 2 DWMP - Rother	03-Jun-21	24-Aug-21
A8780	Finalise Level 2 DWMP	0	24-Aug-21
<b>Regional Level 1 DWMP</b>		08-Jun-18A	31-Dec-22
A8790	Strategic Context - Regional Level 1	25-Sep-19	04-Oct-19
A8800	Development of Level 1 DWMP	100-Oct-19	22-Nov-21
A8810	Regional Programme Appraisal	43-Nov-21	31-Jan-22
A8820	Finalise Draft Level 1 DWMP	06-Feb-22	06-Jun-22
A8830	Sign-off	20-Feb-22	04-Jun-22
A8840	Sign-off	10-Jul-22	20-Jun-22
A8850	DECLINE for Public Draft DWMP	0	30-Jun-22
A8860	Public Consultation on Draft Level 1 DWMP	0	04-Jul-22
A8870	DECLINE for Public Draft DWMP	05-Oct-22	04-Oct-22
A8880	Finalise Level 1 DWMP (Consultation Response)	08-Oct-22	23-Dec-22
A8890	Public Consultation on Draft Level 1 DWMP	0	23-Dec-22
A8900	DECLINE for Public Final Level 1 DWMP	0	31-Dec-22
<b>Procurement</b>		08-Jun-18A	31-Dec-22
A9000	Procurement	01-Jan-19A	31-Mar-19A
<b>Close Out</b>		08-Jun-18A	31-Dec-22
A9010	Financial Close Out	03-Jan-23	27-Mar-23
<b>Defects Liability Period</b>		08-Jun-18A	31-Dec-22
A9020	Financial Close Out	03-Jan-23	27-Mar-23



■ Remaining Level of Effort
 ■ Actual Work
 ■ Critical Remaining Work
 ◆ Milestone
 ■ Remaining Work
 ▼ Summary

Date	Revision	Checked	Approved