

Drainage and Wastewater Management Plans (DWMPs)

Workshop on the Rother DWMP

Friday 11 September 2020



from
**Southern
Water** 

Agenda

- Objectives of the workshop
- Presentation: Drainage & wastewater management in the Rother river basin
- Discussion Session 1: Exploring the Risk Based Catchment Screening
- **BREAK**
- Presentation: Planning Objectives
- Discussion Session 2: Defining the objectives for this river basin catchment
- Next steps



Objectives of the Workshop

- To start working together to develop the DWMP
- To understand the results from the **risk based catchment screening** (RBCS)
- To identify any other issues or concerns in the catchment
- To agree the planning objectives for the DWMP
- To identify any other metrics or indicators of risk that need to be included in the **baseline risk and vulnerability assessment** (BRAVA).

Presentation 1

Drainage and Wastewater Management in
the Rother catchment

Bryan Bleeker
Area Plan Lead - Central



Objectives for this session

- To develop a high level understanding of the drainage and wastewater systems in this catchment
- To understand how the Risk Based Catchment Screening (RBCS) process is used in the DWMP
- To enable you to discuss the results for this catchment

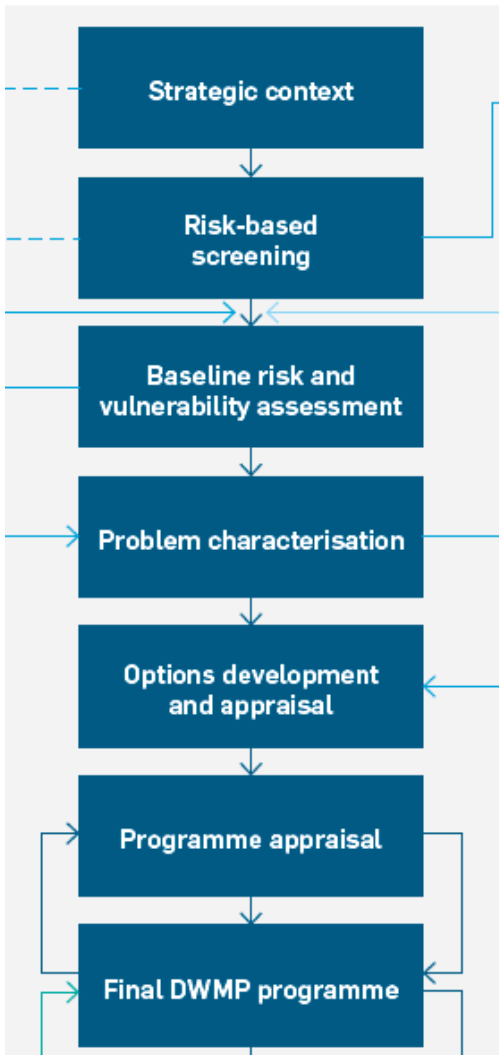
Rother River Basin Catchment



- 55 sewer catchments
- 55 WTWs
- 274 WPS
- 1259km sewers
- 7% area
- 89% homes connected

Risk Based Catchment Screening (RBCS)

- Second step in the DWMP process
- Identifies where there is potential “system vulnerability” to future changes (i.e. risks that need to be investigated during the DWMP)
- Screening process for all 55 sewer catchments
- 18 metrics: 17 specified by Water UK, and we’ve added one additional one on customer complaints



Risk Based Catchment Screening – Results 1

Catchment Ref	Sewer Catchment Name	Catchment Characterisation	Intermittent Discharge	Discharge to Sensitive Waters (part A)	Discharge to Sensitive Waters (part B)	Storm Overflow Assessment Framework (SOAF)	Capacity Assessment Framework (CAF)	Internal Flooding (inside properties)	External Flooding (within curtilage)	Risk of Pollution Incidents (Cat 1-3)	Risk of WWTW Quality non-Compliance	Risk of WWTW Dry Weather Flow non-Compliance	Storm Overflows	Other Risk Management Authority Systems	Planned Residential Development	Environmental Programme (WINEP)	Sewer Collapses	Sewer Blockages	Customer Complaints	Proceed to BRAVA?
		Tier 2	Tier 1	Tier 1	Tier 2	Tier 1	Tier 1	Tier 1	Tier 1	Tier 1	Tier 1	Tier 1	Tier 1	Tier 1	Tier 1	Tier 1	Tier 1	Tier 1	Tier 1	
HYTH	HYTHE																			YES
ROMN	NEW ROMNEY																			YES
TENT	TENTERDEN																			YES
DYMC	DYMCHURCH																			YES
BATT	BATTLE																			YES
RYEW	RYE																			YES
LYDD	LYDD																			YES
CAMB	CAMBER																			YES
TICE	TICEHURST																			YES
ROBE	ROBERTSBRIDGE																			YES
WEST	WESTFIELD																			YES
HAWN	HAWKHURST NORTH																			YES
HAWS	HAWKHURST SOUTH																			YES
IDEN	IDEN																			YES
HUGR	HURST GREEN																			YES
MAYM	MERES FARM MAYFIELD																			YES
NOQL	QUICKBOURNE LANE NORTHAM																			YES
HAST	HAMSTREET																			YES
FAIR	FAIRLIGHT																			YES
BURV	BURWASH VILLAGE																			YES
BRSL	STUBBS LANE BREDE																			YES
WOOD	WOODCHURCH																			YES
SHST	SANDHURST																			YES
GUES	GUESTLING GREEN																			YES
SEDL	SEDLSCOMBE																			YES
ICKL	ICKLESHAM																			YES
BECK	BECKLEY																			YES
WITT	WITTERSHAM																			YES



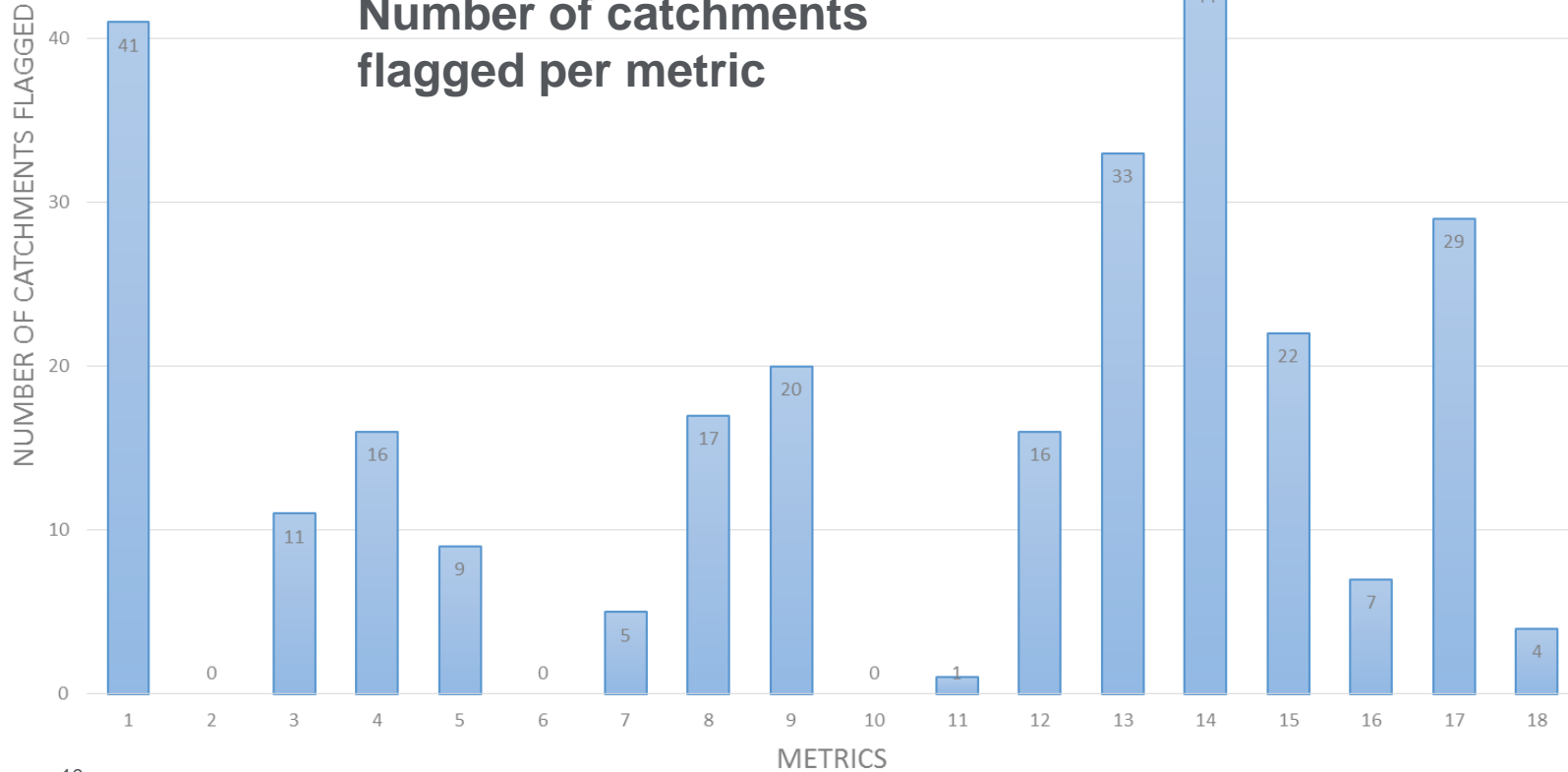
Risk Based Catchment Screening – Results 2

Catchment Ref	Sewer Catchment Name	Catchment Characterisation	Intermittent Discharge	Discharge to Sensitive Waters (part A)	Discharge to Sensitive Waters (part B)	Storm Overflow Assessment Framework (SOAF)	Capacity Assessment Framework (CAF)	Internal Flooding (inside properties)	External Flooding (within curtilage)	Risk of Pollution Incidents (cat 1-3)	Risk of WWTW Quality non-Compliance	Risk of WWTW Dry Weather Flow non-Compliance	Storm Overflows	Other Risk Management Authority Systems	Planned Residential Development	Environmental Programme (WINEP)	Sewer Collapses	Sewer Blockages	Customer Complaints	Proceed to BRAVA?	
		Tier 2	Tier 1	Tier 1	Tier 2	Tier 1	Tier 1	Tier 1	Tier 1	Tier 1	Tier 1	Tier 1	Tier 1	Tier 1	Tier 1	Tier 1	Tier 1	Tier 1	Tier 2		
		1	2	3	4	5	6	7	8	9	10	11	12	13	14	15	16	17	18		
MAYC	CROUCH FARM MAYFIELD																			YES	
WADL	WASHWELL LANE WADHURST																			YES	
WIBE	WINCHELSEA BEACH																			YES	
BENE	BENENDEN																			NO	
BURC	BURWASH COMMON																			YES	
APPL	APPLEDORE																			YES	
WIFH	FERRY HILL WINCHELSEA																			YES	
STCR	STAPLECROSS																			YES	
NETH	NETHERFIELD																			YES	
WARE	WAREHORNE																			YES	
ROLN	ROLVENDEN LAYNE																			YES	
BROO	BROOKLAND																			YES	
IDEG	IDEN GREEN																			YES	
STON	STONEGATE																			YES	
BILS	BILSINGTON																			YES	
STOG	STONE GREEN STONE IN OXNEY																			YES	
NOMC	MILL CORNER NORTHIAM																			YES	
NEEN	NEWENDEN																			YES	
BOLL	LEVETTS LANE BODIAM																			YES	
IVYC	IVYCHURCH																			YES	
WHAT	WHATLINGTON																			YES	
UDIM	UDIMORE																			YES	
READ	READING STREET																			YES	
SQCT	QUARRY COTTAGES STONE IN OXNEY																			NO	
EWHU	EWHURST GREEN																			YES	
BRWW	BREDE WATERWORKS																			YES	
MNTF	MOUNTFIELD																			YES	
THOA	THREE OAKS																			YES	
																					54



Risk Based Catchment Screening

Number of catchments flagged per metric



Discussion Session 1

Discussing the results of the RBCS

Session 1: Risk Based Catchment Screening (RBCS)

Questions:

1. Based on the results, what are your main concerns in this river basin catchment?
2. What other issues or concerns do you have in this river basin catchment?
3. Are all the sewer catchments (where you have the most concerns) flagged to progress to BRAVA?
4. For any other concerns identified, what data could be used to assess the scale of the issue now and in the future?



Presentation 2

Planning Objectives for the DWMP

Bryan Bleeker
Area Plan Lead - Central

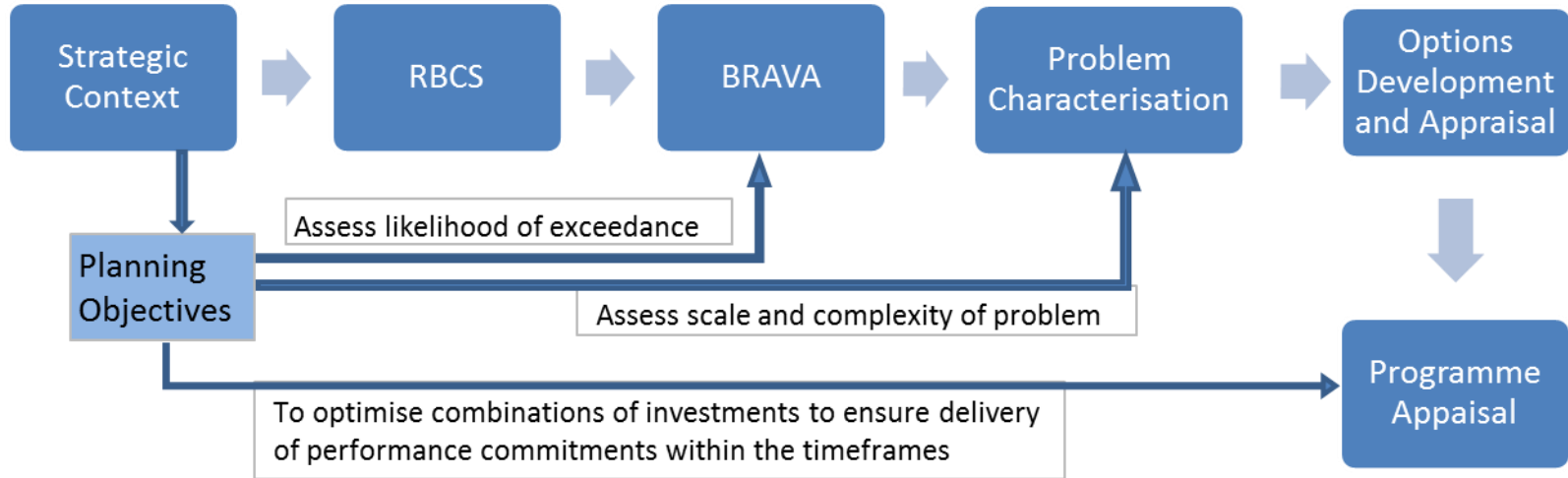


Objectives for this session

- To understand why we need planning objectives and how they will be used
- To know what planning objectives have been specified by Water UK for all companies to report
- To facilitate discussion on any additional planning objectives that may be needed for this river basin catchment



Planning Objectives



Planning Objectives

- Water UK requires all water companies to report on the following 6 planning objectives:
 1. Risk of sewer flooding in a 1 in 50-year storm
 2. Storm overflow performance
 3. Risk of WTW compliance failure
 4. Internal sewer flooding risk
 5. Pollution risk
 6. Sewer collapse risk
- What is missing? Are any additional planning objectives needed for this river basin catchment?



Planning Objectives – methodology for BRAVA

- Water UK sets out how each of the 6 planning objectives needs to measure and report on risk in 2020, and for 2050 (where required)
- Describes how risks will be assessed in BRAVA stage
- Additional planning objectives – need to consider how to measure the risks now, and for future planning horizons
 - What data is available? Coverage, ownership, format, accessibility?
 - Can we assess the likelihood of occurrence in the future, and consequence?
 - Can the outcomes be influenced by us, or other risk management organisations?
- Next step to develop BRAVA methodology for each planning objective



Discussion Session 2

Identifying planning objectives

Session 2: Planning Objectives

Questions:

Based on the RBCS results from breakout 1, all groups to discuss:

1. Are all your areas of concern / issues covered by the 6 national planning objectives?
2. If not, then what gaps need to be filled with additional planning objectives?
3. What additional indicators, metrics or data could we use to measure the current and future risks for any additional planning objectives?



Next Steps



Next Steps: Timetable

Dates	Activity
To Nov 2020:	Working with partner organisations to develop the strategic context, planning objectives and baseline risk and vulnerability assessment (BRAVA)
Dec 2020	Submission of BRAVA to Water UK
Jan – Sep 2021	Working with partners on options development and appraisal
Autumn 2021	Start early consultation with customers on the catchment based DWMPs (Level 2)
Summer 2022:	Public consultation on the regional DWMP
January 2023	Publish final DWMPs

Thank you for participating today

Contact us: DWMP@southernwater.co.uk

